

Domestic Violence & Abuse Working From Home

Signs and Indicators



Is there a change in productivity?
More frequent lateness, absences etc.



Reduced quality and quantity of work



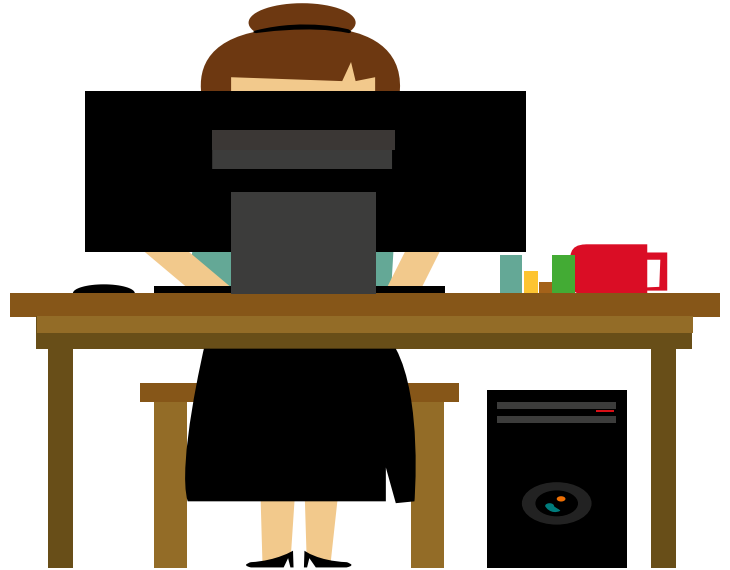
Change in behaviour



Not wanting to work from home. The office is her safe place.



Your employee acting coached or as if she is being monitored.



Women's aid

Belfast and Lisburn

02890 666049
www.belfastwomensaid.org.uk

Types of Domestic Abuse

Emotional Abuse and Coercive Control



Financial Abuse



Cyber Abuse



Physical Abuse



Sexual Abuse

